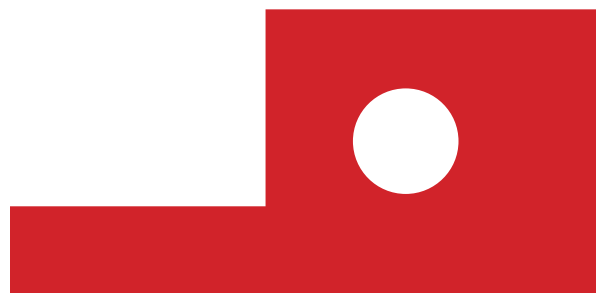


Thank you



Thank you for your purchase. ACUS would like to thank you for choosing one of its products with which you will be able to obtain exciting qualitative results and wishes you to enjoy your best sound in the company of

ONEFORSTRINGS  Ferdi

POWERED WITH
FerdiUXLogic
LOGIC USER INTERFACE EXPERIENCE

IMPORTANT SAFETY INSTRUCTIONS

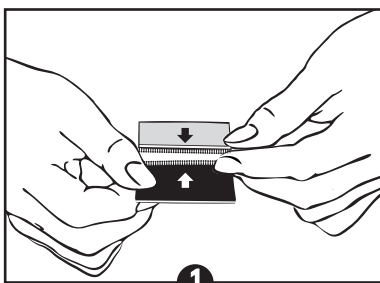
1. Read these instructions.
2. Keep these instructions.
3. Heed all warnings.
4. Follow all instructions.
5. Do not use this apparatus near water.
6. Clean only with dry cloth.
7. Do not block any ventilation openings.
8. Do not install near any heat sources as radiator, heat registers, stoves or other apparatus (including amplifiers) that produce heat.
9. Only use attachments/accessories specified by the manufacturer.
10. Use only with the cart, stand, tripod, bracket or table specified by the manufacturer, or sold with the apparatus.



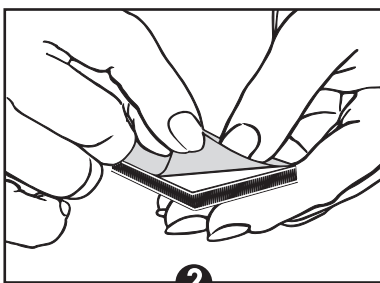
11. When a cart is used, use caution when moving the cart/apparatus combination to avoid injury from tip-over. Refer all servicing to qualified personnel. Servicing is required when the apparatus has been damaged in any way, such as power-supply cord or plug is damaged, liquid has been spilled or objects have fallen into the apparatus, the apparatus has been exposed to rain or moisture, does not operate normally, or has been dropped.
12. Do not cover the dissipation heat sink. Leave space around the amplifier to ensure a good ventilation.
13. The apparatus shall not be exposed to dripping or splashing and no objects filled with liquids, such as vases, shall be placed on the apparatus.
14. No naked flame sources, such as lighted candles, should be placed on the apparatus.
15. Remove the battery during transportation.

INSTRUCTIONS FOR FIXING THE POWER SUPPLY

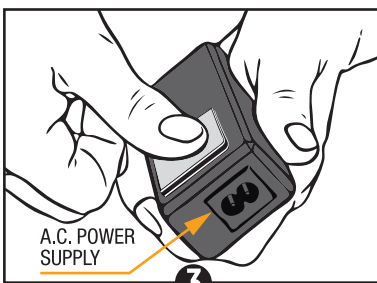
N.B.: To avoid problems fixing the power supply, it is very important to perform the sequence of operations described below:



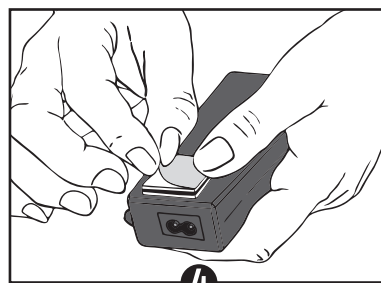
Pair the two pieces of 3M autogrip, included in the box, exerting a fair amount of pressure thus making a single, compact block.



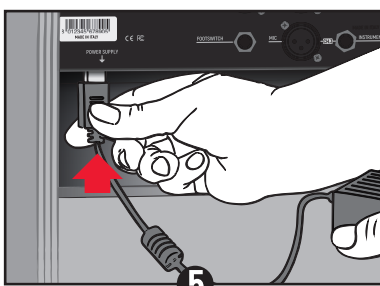
Remove the protective film of the double-sided adhesive from only one of the two sides.



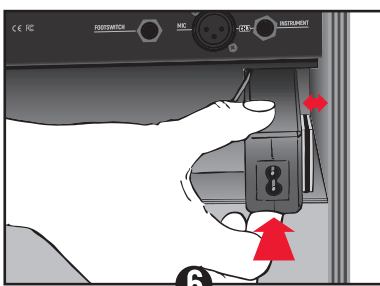
Stick the paired pieces of autogrip onto the power supply from the A.C. socket side.



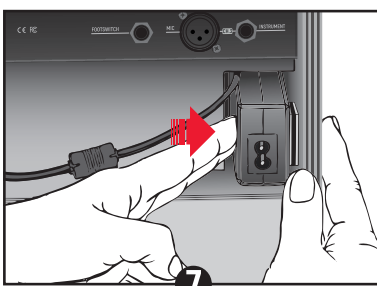
Remove the protective film of the double-sided adhesive from the second side.



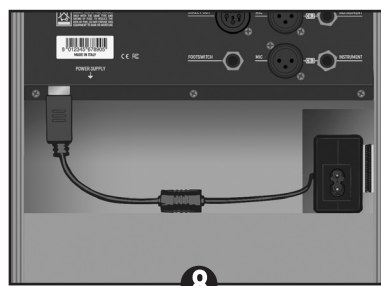
Connect the plug of the power supply to the D.C. socket of the amplifier.



Place the power supply in the compartment provided, taking care not to touch the wall of the cabinet on which it is to be fixed.



Stick the power supply, with a fair amount of pressure, to the inside edge of the right wall of the amplifier as in the figure.



This must be the final result. N.B. 3M double-sided adhesive will be at its most efficient after a few hours.

All names and trademarks present in this publication belong to their respective owners

ONEFORSTRINGS  Ferdi

is a product entirely designed and produced in Italy
by

ACUS SOUND ENGINEERING SRL

Via Cupa Madonna di Varano, 8 - 62019 Recanati (MC) - Italy

Tel. +39 071 9793109

www.acus-sound.it - info@acus-sound.it

QUICK START GUIDE

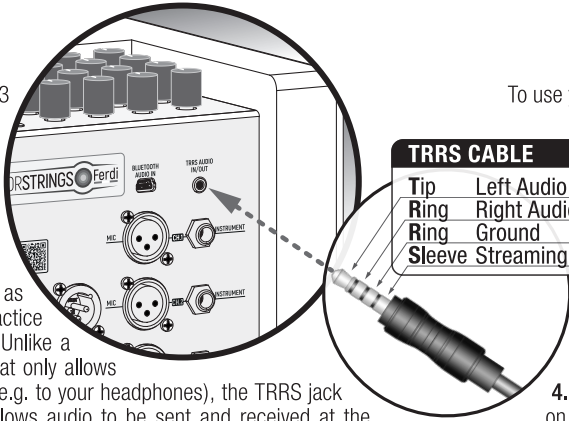
CONTROLS

- 1. MIC IN** with 1kΩ of Impedance. You can connect any type of microphone on it, even Condenser Microphone (this input is equipped with a Phantom power, can be activated by relative PHANTOM switch)
- 2. INSTRUMENT IN** with 110kΩ of Impedance. You can connect any type of Instrument on it. This input does not exclude the MIC IN (1).
- 3. GAIN:** this knob permits to regulate the gain of the system (its range is from -12 to +15dB).
- 4. HIGH - MID - LOW:** 3 band EQ with a dynamic from -15dB to +15dB.
- 5. EFFECT:** channel Effect Level. The system is equipped with a multi-effect. For detail see points (10) and (11).
- 6. VOLUME:** channel Volume
- 7. CH1 - COMPRESSOR THRESHOLD:** with this knob you can activate the compressor (if its position is over 0) or deactivate the compressor (its position between OFF and 0 position). When the compressor is ON the relative LED is ON. When the compressor is ON with this knob you can regulate the compressor THRESHOLD.
- 8. CH1 - COMPRESSOR RATIO:** with this knob you can regulate the Ch1 Compressor Ratio if Ch1 Compressor is ON (Compressor LED ON).
- 9. CH1 - STYLES SWITCH:** with this switch is possible to change the channel 1 equalization and the 3 bands EQ center frequency. You have 3 position: FLAT is the standard equalization (channels 2 and 3 have only this type of equalization). BASS is designed for instruments that operate in bass frequency range (like Bass Guitar and Double Bass). JAZZ is for Electric Guitar and Jazz Guitar.
- 10. EFFECT SECTION SWITCH:** with this switch is possible to select one of the 4 effect of the system. Effect are Short Reverb (REV 1), Long Reverb (REV 2), Chorus (CHR) and Delay (DEL)
- 11. EFFECT SECTION EFF LENGTH:** with this Delay knob is possible to change the peculiarity of the selected effect. For both reverb this knob regulates the Reverb Length. For Chorus this knob regulates the Chorus Rate. For Delay this knob regulates the Delay Time.
- 12. AUX VOLUME HIGH-LOW:** these 3 knobs are for AUX input (Artesia BT-1 and TRRS 3.5mm Jack) for regulating input volume and 2 bands EQ with a dynamic from -15dB to +15dB.
- 13. TRRS OUT VOL:** this knob is for regulating line outputs volume (for TRRS output level and for DIRECT OUT output level).
- 14. PHANTOM POWER:** switch for activating the Phantom Power (24V) to MIC IN inputs.
- 15. POWER SUPPLY / STAND BY:** leds that show the amplifier status (ON or stand-by)
- 16. EFF RTN:** Return of the Effect of the system. When you close totally this knob (in the 0 position) you close the effect volume on all channels.
- 17. MASTER VOL:** this knob regulates the Master volume of the system. It allows also to put system in stand-by status or in ON status. When the MASTER VOL is in the 0 position, the system is in standby mode and the red STAND BY LED will light up. The system will be active when the MASTER VOL knob is turned to at least 0.
- 18. TRRS AUDIO IN/OUT:** 3.5 jack for stereo input and live streaming output. See TRRS AUDIO IN/OUT section
- BLUETOOTH AUDIO IN:** connector for Artesia BT-1 bluetooth receiver (included).
- 19. DIRECT OUT:** balanced output for connecting the amplifier to an external system (like PA System, live mixer, Acus extension, ...).
- 20. FOOT SWITCH:** 6.3mm Jack for connecting an external footswitch (not included). With the footswitch is possible to turning ON/OFF the Effect. When the Effect is OFF none of the 4 relative leds are on.

TRRS AUDIO IN/OUT

Play audio from your phone, MP3 player, tablet or laptop through the **ONEFORSTRINGS Ferdi** using a stereo 3.5 mm AUX cable (not supplied). Adjust your device's volume to match that of your acoustic guitar to enable you to play along.

Use your **ONEFORSTRINGS Ferdi** as an interface to play, live stream, practice and record on your mobile device. Unlike a standard audio 3.5mm TRS jack that only allows audio to be sent from your device, (e.g. to your headphones), the TRRS jack on your **ONEFORSTRINGS Ferdi** allows audio to be sent and received at the same time. This allows you to playback audio from your device and send audio to your device from your **ONEFORSTRINGS Ferdi**. This feature allows you to use apps such as GarageBand and Instagram live with a single cable.



To use your **ONEFORSTRINGS Ferdi** amplifier as your Livestream Interface:

1. Connect your TRRS cable to your amplifiers TRRS AUDIO IN/OUT socket (see diagram above).
2. Connect the opposite end of the TRRS cable to your devices 3.5mm input.
- NOTE:**
Apple iPhone / Tablet users: To connect to your mobile device, use a Lightning to 3.5mm adaptor (It is advised to use an official Apple manufactured cable / Adaptor for guaranteed compatibility)
3. Open an Audio recording software or Camera application on your phone.
4. Press record to test your levels are loud and clear. Use the channel 'Gain' controls on your amplifier to set the level sent to your phone.
5. Test and adjust your channel controls and effects for optimum sound on your amplifier.
6. Record high quality videos, audio memos and livestream (direct to Instagram Live, Facebook, YouTube, Twitch and more) straight from your amplifier.

SPECIFICATIONS

	ONEFORSTRINGS 5 Ferdi	ONEFORSTRINGS 8 Ferdi	ONEFORSTRINGS 10 Ferdi
Frequency Response	50 Hz - 20K Hz	40Hz - 20K Hz	40Hz - 20K Hz
Max power Out	70 Watt	140 Watt	250 Watt
Woofers size	5"	8"	10"
HF Speaker	Dome tweeter 1"	Dome tweeter 1"	Compression Driver 1"
Sensitivity 1W 1m	89,6 dB	89,6 dB	95,2 dB
SPL MAX	106 dB	109 dB	114 dB
Power System	External Power Adapter 24V DC (Included)		

	ONEFORSTRINGS 5 Ferdi	ONEFORSTRINGS 8 Ferdi	ONEFORSTRINGS 10 Ferdi
Construction	Brich Playwood		
Colors	Cherry Wood, Black Wood		
Height	30,5 cm - 12 inch	38,4 cm - 15.12 inch	46,4 cm - 18.26 inch
Width	25,3 cm - 9.96 inch	27,7 cm - 10.9 inch	30,1 cm - 11.85 inch
Depth	28,0 cm - 11.02 inch	31,0 cm - 12.2 inch	35,0 cm - 13.78 inch
Weight	7,4 Kg - 16.31 lb	10,4 Kg - 22.93 lb	13,6 Kg - 29.98 lb
Accessories	Bluetooth receiver (Included)		

SMART ACCESSORIES

ACUS Artesia BT-1

1. Make sure that the amplifier is powered off and connect the ACUS Artesia BT-1 Bluetooth Receiver to mini-USB AUX IN connector.
2. Turn the amplifier on. The ACUS Artesia BT-1 Bluetooth Receiver blue LED indicator lamp should flash quickly. This lasts for about 5 seconds. Then it will flash again every 7 seconds until it matches (or pair) successfully with another Bluetooth device.
3. After it has matched successfully, find ACUS Artesia BT-1 as an option on your Bluetooth Device's Settings and then select it to connect.
4. When the blue LED Indicator lamp on the ACUS Artesia BT-1 Bluetooth Receiver is ON steady with no flashing, then the two devices have been successfully connected.

